

Democratic Governance for City Winnipeg

A People's Climate Plan for
Winnipeg
Climate Reality Project
June 11, 2026

• Marianne Cerilli – Change Agent &
• TLUC -Transportation & Land Use
Coalition
anatomyofapothole.ca



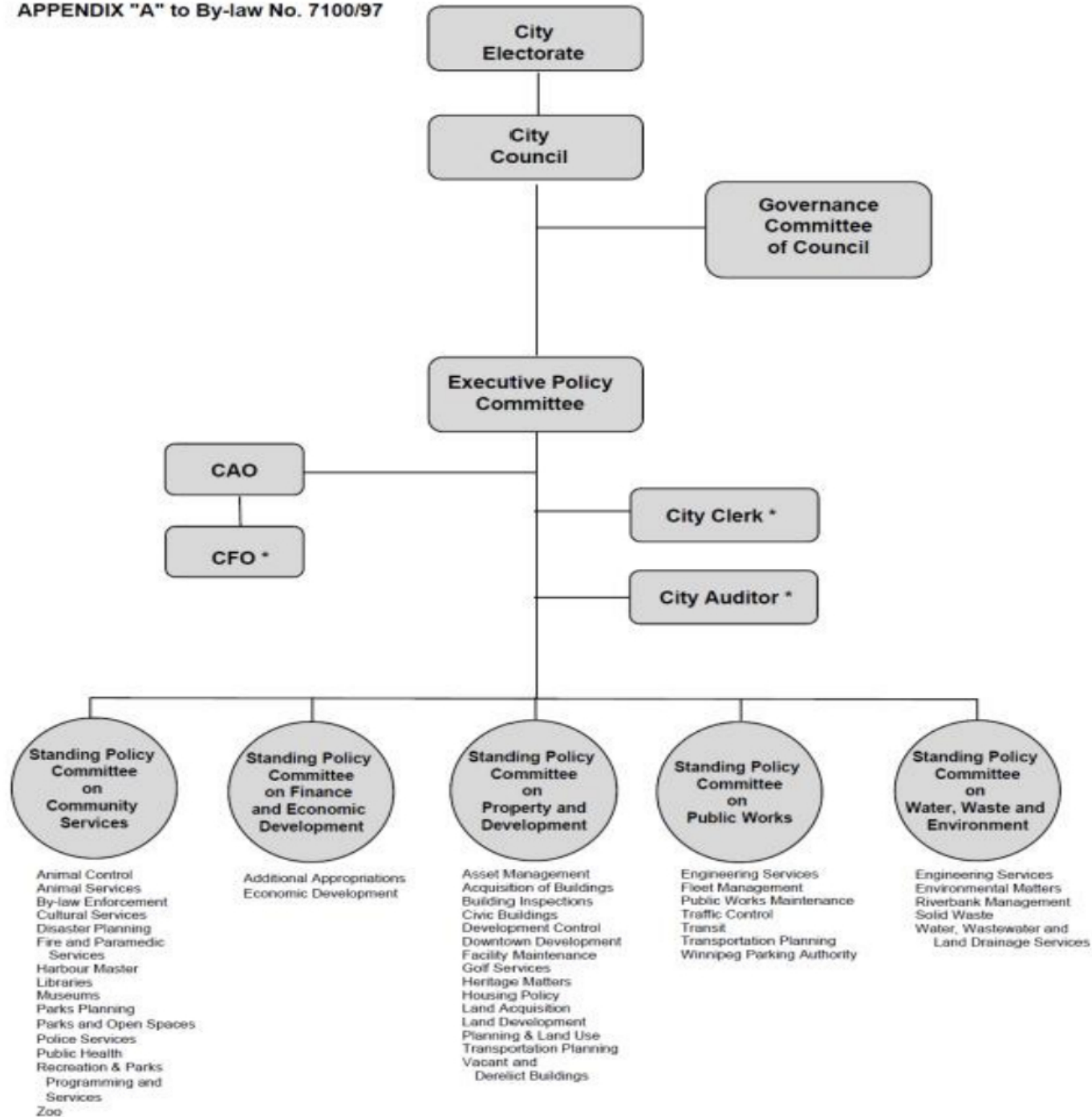
- What is the TLUC – a coalition of groups and individuals working of a healthy city. Our focus - transportation policy, improving budget processes, stopping sprawl.
- Our logo – 1971 to 2026 Winnipeg - city serviced land group by 58% but population only grew by 86%. The image tells the story of an unsustainable city, taxes can't keep up with infrastructure maintenance or to innovate for sustainability.
- Intersections of urban planning approaches, economic development approaches and governance approaches all contribute to the systems we deal with as the City of Winnipeg. We need to understand the rules, work with and challenge the process.

A People's Climate Mandate - Democratic Governance Outline

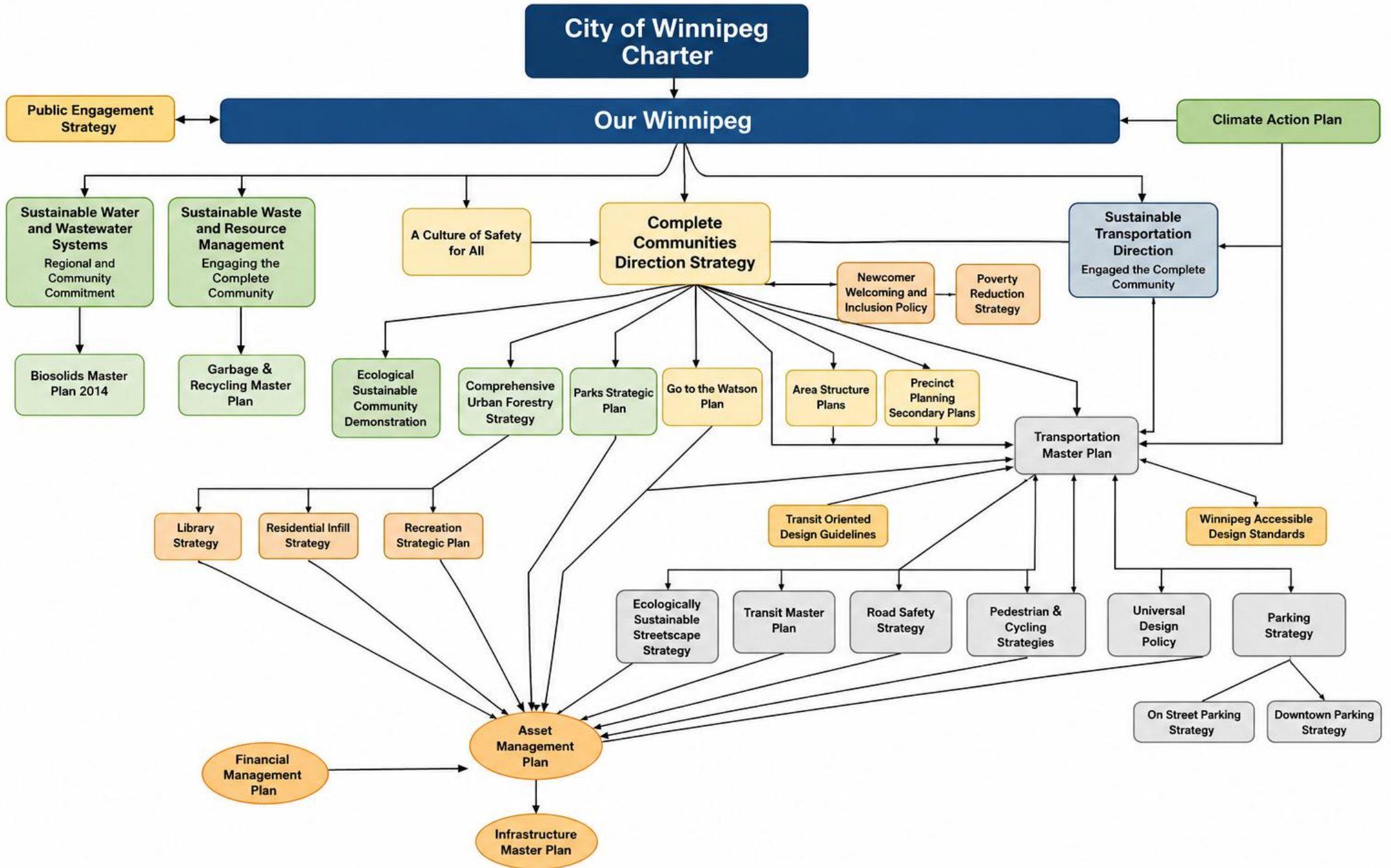
1. What is governance and why is it so important
2. **Legal framework** – provincial laws and city charter, by-laws
3. **Elections** – rules, wards, timelines, money, candidates
4. **Council & Committees** – agenda setting, public input, decisions
5. **Planning** – structures and procedures plans, zoning, variances, land use types
6. **Policy** – master plans, policies, by-laws, that are not funded or followed.
7. **Budget** – process and timelines, public input, alignment with public policy.
8. **Activist organizing** – our self-governance, how we organize our movement
9. **Conclusions & discussion** – your priorities, tools for governance & democracy

“For a climate smart city, we need **policy** brains to determine **what** changes we want to see in our city, including economic/budget policy, we also need **process** brains to understand and innovate **how** we achieve these changes in our city, we also need a **people power** brain for more **collaboration** between these brains **and more democratic governance** to bring it all together for a healthy, equitable, democratic Winnipeg. M Cerilli












* CFO, City Auditor and City Clerk have statutory reporting relationship to City Council



Two Approaches to Economic Development

Drivers	Community Wealth Building	Traditional Approach
 Place	Develops under-utilized local assets of many kinds, for benefit of local residents.	Aims to attract firms using incentives, which increases the tax burden on local residents.
 Ownership	Promotes local, broad-based ownership as the foundation of a thriving local economy.	Supports absentee and elite ownership, often harming locally owned family firms.
 Multipliers	Encourages institutional buy-local strategies to keep money circulating locally.	Pays less attention to whether money is leaking out of community.
 Collaboration	Brings many players to the table: nonprofits, philanthropy, anchors, and cities.	Decision-making led primarily by government and private sector, excluding local residents.
 Inclusion	Aims to create inclusive, living wage jobs that help all families enjoy economic security.	Key metric is number of jobs created, with little regard for wages or who is hired.
 Workforce	Links training to employment and focuses on jobs for those with barriers to employment.	Relies on generalized training programs without focus on linkages to actual jobs.
 System	Develops institutions and supportive ecosystems to create a new normal of economic activity.	Accepts status quo of wealth inequality, hoping benefits trickle down.